

Val Borbera

Guidelines for rehabilitating and protecting the basic elements of the agrarian landscape

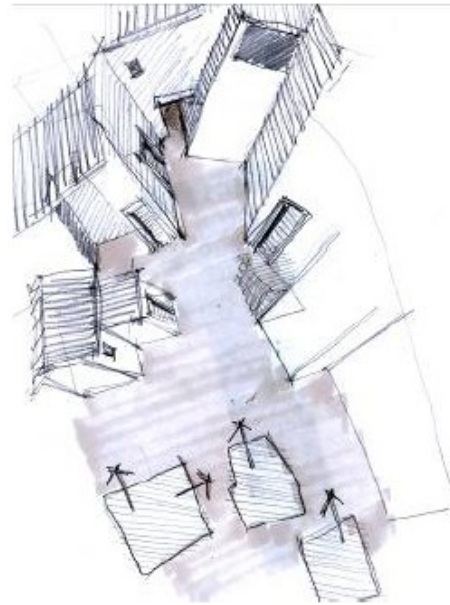
Marta Francesca Tolli

THEME: protection and enhancement of the agrarian landscape

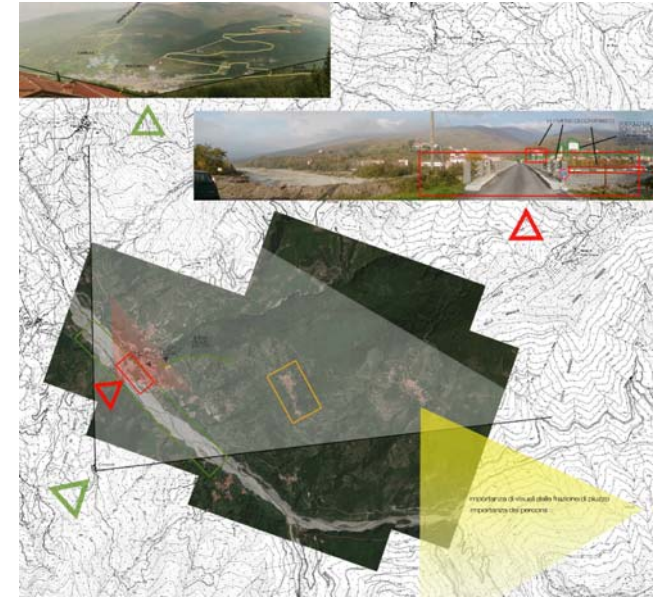
AREA Val Borbera, Piedmont.

OBJECTIVES rehabilitating and protecting the basic elements of the agrarian landscape strongly influenced by the geographical position of the valley stretching between Piedmont, Emilia Romagna, Liguria and Lombardy and representing a historical trade crossroads between the plain and the sea.

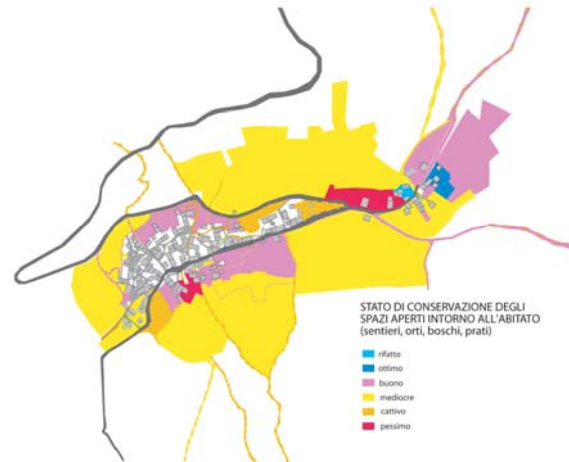
PROJECT: guidelines for the protection, conservation, re-use and requalification of landscape at the various scales: territory, settlement and building, from the system of relations to the single artifact linked with work tools (washing basins, furnaces, mills and all the elements connected with the organization of the agricultural space, such as terracing, fencing, mountain paths and trails).



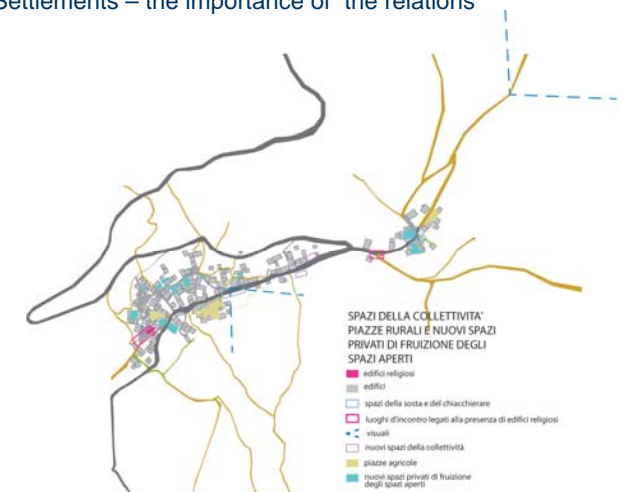
Spaces for public use - "rural squares"



Settlements – the importance of the relations



Conservation conditions of open spaces surrounding the settlement



Spaces for public use – "rural squares" and new ways of using open spaces